

K 891 • 991 TS

PREMIUM

**HOT WATER
SEALS**

TSR



Reversible handlebar
Manubrio reversibile



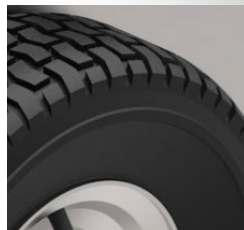
Stainless steel cover
Telaio in acciaio inox

Stainless steel pressure gauge
Manometro in acciaio inox

RW Premium

With integral ceramic pistons and brass pump head

Con istoni in ceramica integrale con testata in ottone



Pneumatic wheels
Ruote pneumatiche





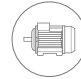



FOR MORE INFO:
MAGGIORI INFORMAZIONI:



GENERAL FEATURES · CARATTERISTICHE GENERALI

- Heavy duty structure with stainless steel cover
- Handy and secure housing of the hose reel (when applicable) in back position on the handlebar
- Readily serviceable brass suction filter
- Hot water seals
- 4-pole motor (1400 rpm) well oversized and protected with paint
- Professional unloader valve
- Delayed Total Stop
- Exclusive pump-motor coupling system for intensive use
- Contactor
- Motor thermal protection
- *Struttura robusta ed affidabile con cofano in acciaio inox*
- *Pratica e sicura collocazione dell'avvolgitubo (quando previsto) in posizione posteriore sul manubrio*
- *Filtro aspirazione in ottone ispezionabile*
- *Guarnizioni ad acqua calda*
- *Motore a 4 poli (1400 giri/min) ampiamente sovradimensionato e protetto da verniciatura*
- *Valvola regolazione pressione professionale*
- *Total Stop ritardato*
- *Esclusivo sistema accoppiamento pompa - motore per uso intensivo*
- *Teleruttore*
- *Protezione termica motore*
- *Uso professionale intensivo*

TECHNICAL FEATURES · CARATTERISTICHE TECNICHE

CODE CODICE	MODELS MODELLI	PUMP POMPA														
			Ph	V	Hz	bar	MPa	bar	MPa	l/h	HP	kW	kW	kg	(L x W x H) cm	
9024 4072	K 891 TS 15/230 T	RW Premium	3	400	50	230	23	30±220	3±22	330÷900	9,0	6,7	7,3	70	60 x 115 x 88	
9024 4073	K 891 TS 21/180 T	RW Premium	3	400	50	180	18	30±160	3±16	560÷1260	9,0	6,7	7,3	70	60 x 115 x 88	
9024 4071	K 991 TS 15/270 T	RW Premium	3	400	50	270	27	50±260	5±26	400÷900	10,0	7,4	8,5	75	60 x 115 x 88	
9024 4074	K 991 TS 17/250 T	RW Premium	3	400	50	250	25	30±240	3±24	360÷1020	10,0	7,4	8,5	75	60 x 115 x 88	
9024 4057	K 991 TS 21/210 T	RW Premium	3	400	50	210	21	30±200	3±20	490÷1260	10,0	7,4	8,5	75	60 x 115 x 88	

STANDARD EQUIPMENT · DOTAZIONE STANDARD



GH 401 gun with extension and swivel (n.2 o-ring)
Pistola GH 401 con estensione e swivel (n.2 o-ring)



Bent lance with detergent head, without nozzle
Lancia angolata con testina detergente, senza ugello



25° spray nozzle, 1/4" MEG connection
Ugello con getto a lama 25° attacco 1/4" MEG



Ejector kit
Kit eiettore



10 m rubber delivery hose kit
Kit tubo gomma mandata 10m



Brass inlet water filter
Filtro aspirazione acqua in ottone